



DOWNTOWN DECK  
PLAZA FOUNDATION

# Community Advisory Committee

March 2, 2023

# Agenda

---

## **Part 1**

Stakeholder Interviews Update (Mend Collaborative)

## **Part 2**

Public Involvement Update (Conсор)

## **Part 3**

Planning Update (Stantec)



DOWNTOWN DECK  
PLAZA FOUNDATION

# Stakeholder Interviews Update

---



DOWNTOWN DECK  
PLAZA FOUNDATION

# Public Involvement Update

---



DOWNTOWN DECK  

---

PLAZA FOUNDATION

# Public Involvement Update

---

## Open House Community Meetings

(Round 1 – Visioning)

### **East El Paso**

Monday, February 27, 4:30-6:30pm  
EPPD Pebble Hills Regional Command  
10780 Pebble Hills Boulevard

### **West El Paso**

Tuesday, February 28, 4:30-6:30pm  
EPPD Westside Regional Command  
4801 Osborne Drive

### **Downtown El Paso**

Wednesday, March 1, 4:30-6:30pm  
City of El Paso Center for Civic Empowerment  
Blue Flame Building  
17<sup>th</sup> Floor



DOWNTOWN DECK  
PLAZA FOUNDATION



# Public Involvement Update

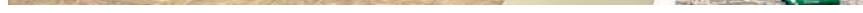


**East El Paso**

Monday, February 27, 4:30-6:30pm



**DOWNTOWN DECK  
PLAZA FOUNDATION**



Tuesday, February 28, 4:30-6:30pm



# Public Involvement Update

---

**Downtown El Paso**

Wednesday, March 1, 4:30-6:30pm



DOWNTOWN DECK  
PLAZA FOUNDATION



# Public Involvement Update

---

## **In-Person Attendance**

Eastside: 21

Westside: 22

Downtown: 45

## **Virtual Participation**

Contributions: 24



DOWNTOWN DECK  
PLAZA FOUNDATION

# Public Involvement Update

---

## Major Themes:

- Shade/green space
- Native trees/plants
- Vendor spaces/food trucks
- Performance spaces
- Reconnection of neighborhoods
- Uniqueness of El Paso



DOWNTOWN DECK  
PLAZA FOUNDATION

# Public Involvement Update

---

## Major Concerns:

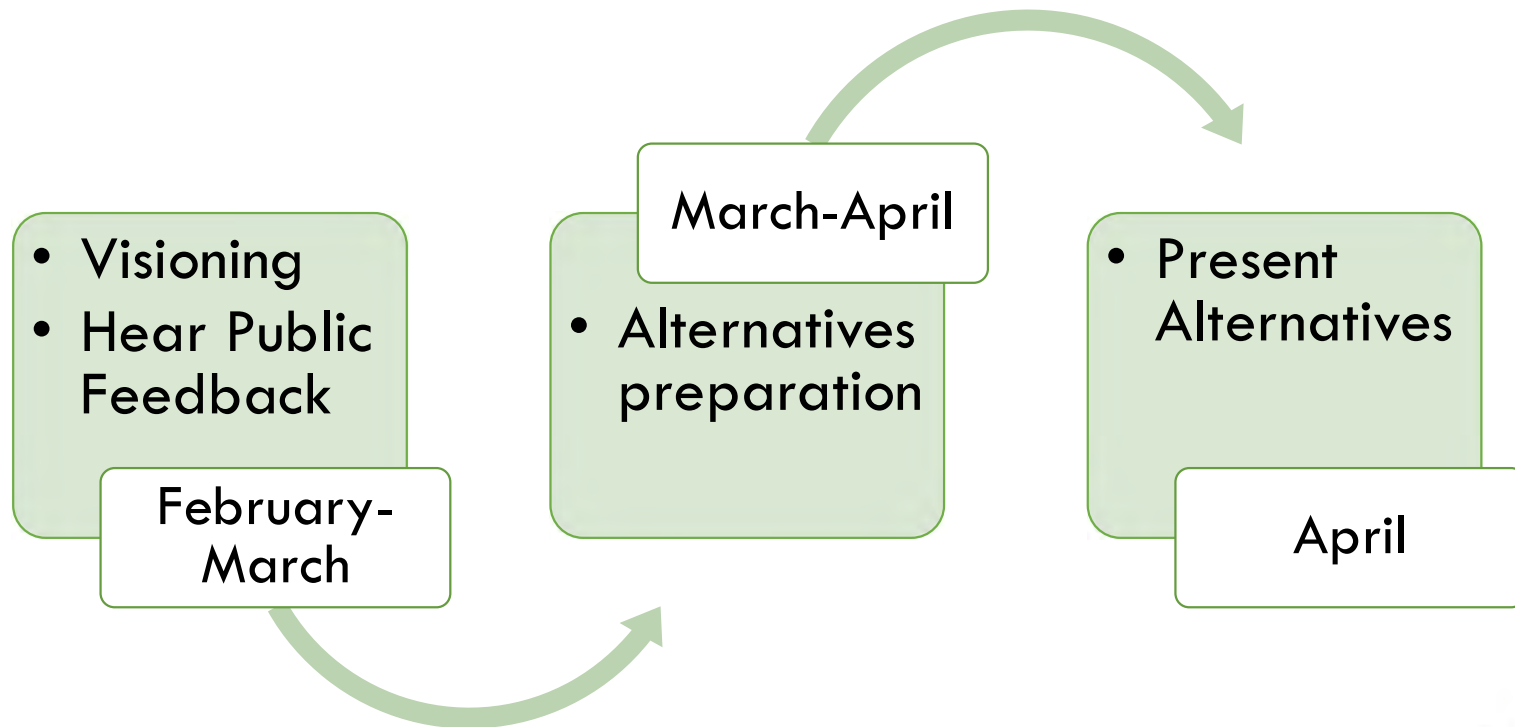
- How will pedestrians interact with the space?
- What will the ultimate transportation improvements look like?
- What is the mechanism to fund construction and/or operations & maintenance of the facility?



DOWNTOWN DECK  
PLAZA FOUNDATION

# Public Involvement Update

---





# Planning Update

---



DOWNTOWN DECK  

---

PLAZA FOUNDATION



# Once-In-A-Generation El Paso Opportunity

An unprecedented opportunity to create a unique place for all El Pasoans that reflects El Paso's rich heritage and culture, reconnecting adjacent neighborhoods to enhance livability, economic opportunity, and a shared sense of community for the binational region.



# What makes a great public space?

- People
- Programming
- Design
- Placemaking



# Three-Day Workshop Activities

---

- Public Open House Input
- Site Visit
- Programming Focus Group
- Discussion with TXDOT
- Discussion with Technical Committee
- What you will see today are the raw results of a working/learning session



The background of the slide is a photograph of a large, complex rope climbing structure in a park. Several children are seen climbing the structure, which is made of thick yellow ropes and metal frames. The scene is bright and sunny, with green trees and a clear blue sky visible in the background. The text is overlaid on the left side of the image.

## **Project Goals** (Based on Themes from Community Input)

- **Authentic cultural crossroads**
- **Inviting sense of place**
- **Enhanced connectivity/accessibility**
- **Inclusive economic development**
- **Cutting-edge sustainability**
- **Implementation feasibility**

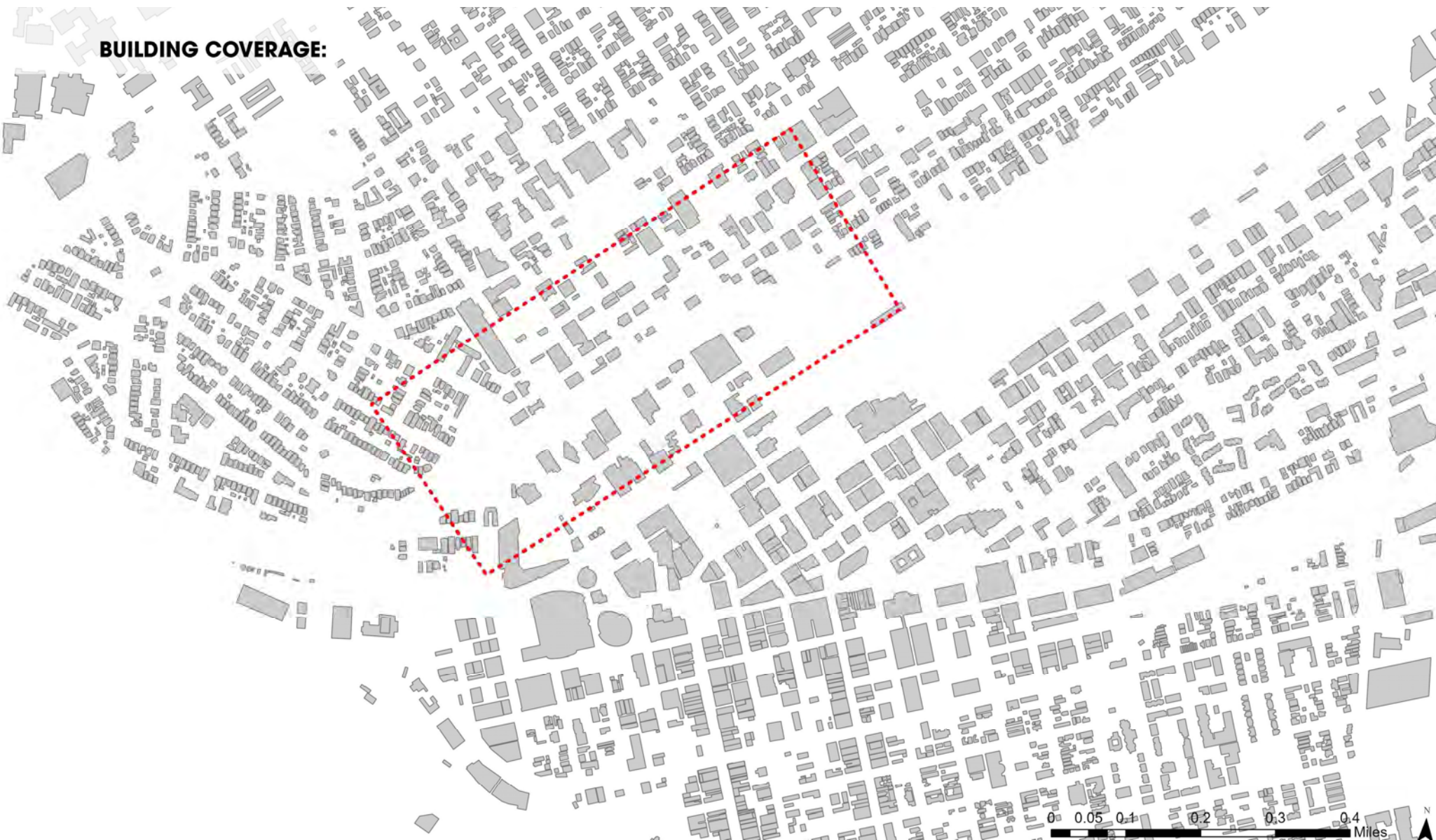


# Relating to the Context





**BUILDING COVERAGE:**





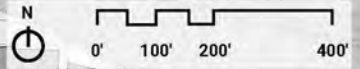
**ACTIVE/INACTIVE FRONTAGES:**

INACTIVE FRONTAGE

ACTIVE FRONTAGE

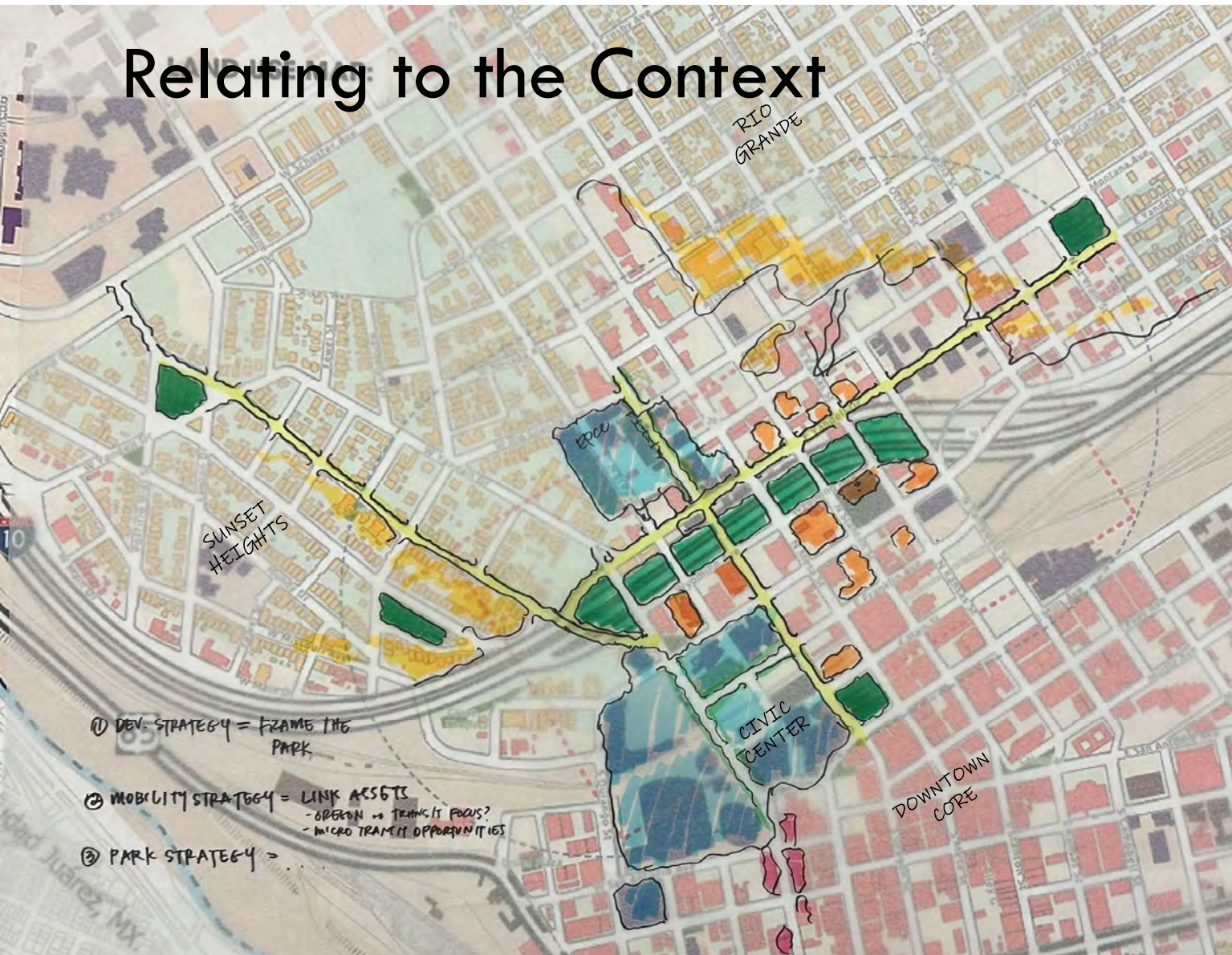
0' 100' 200' 400'

●●● ACTIVE FRONTAGE





# Relating to the Context



- Connect to adjacent neighborhoods
- Repair the urban fabric
- Capitalize on cultural and institutional proximities
- Use context clues for programming



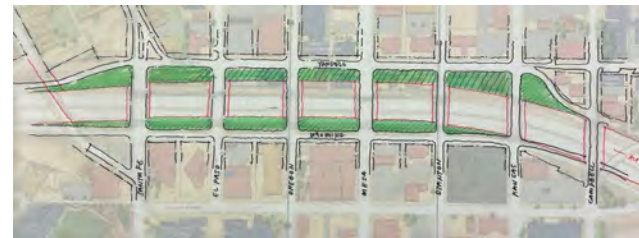


## Mobility

- Connect Stanton Cycle Track
- Mobility Hub(s)
- El Paso Street as N/S Bike Connection
- Prospect Bike/Ped Connection to Downtown
- Oregon – Transit Center

# Framework Options

- Option 1: —————→
  - TxDOT Alternative D
  - Retain El Paso grid and existing properties
- Option 2: —————→
  - TxDOT Alternative I
  - Space between Yandell and Wyoming maximized
- Option 3: —————→
  - Hybrid of TxDOT alternatives





# Concept Framework 1



- Existing private properties can be retained
- Existing El Paso Street grid is maintained

Key:

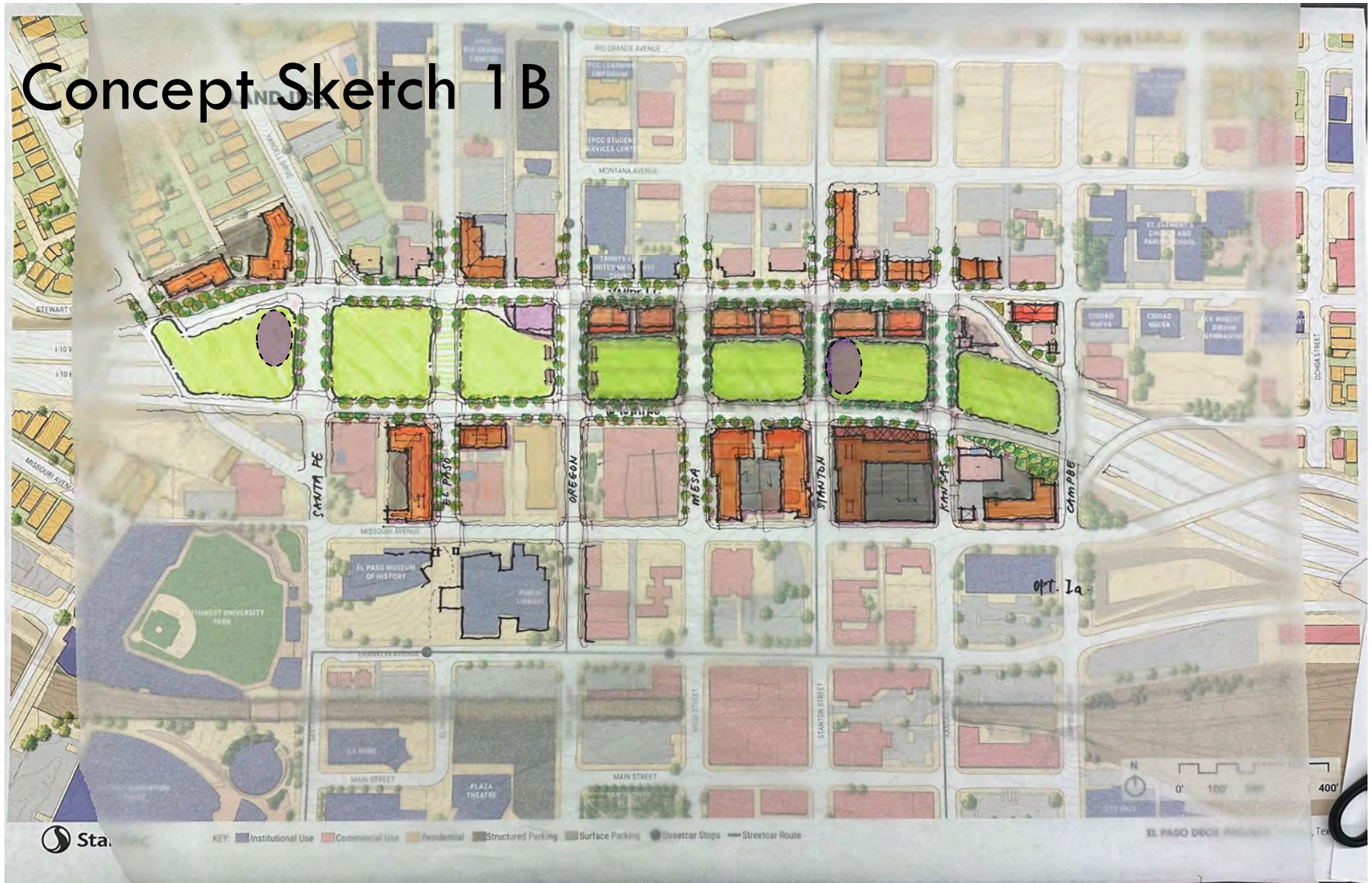
- /// Terra Firma (Solid Ground)
- Building Opportunity
- Plaza Buildings, Robust Planting, Shade Structures, etc.



[illegible]

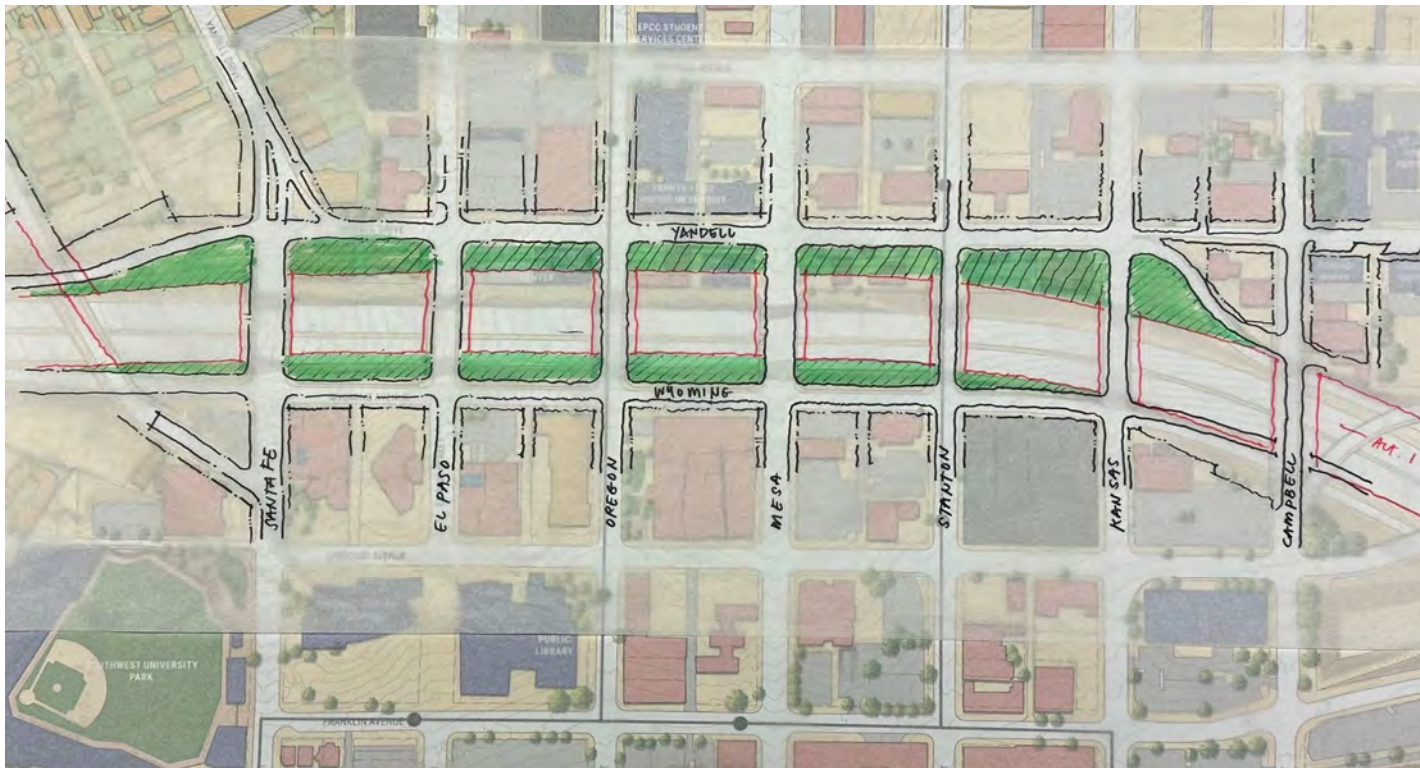


# Concept Sketch 1 B





# Concept Framework 2



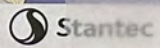
- I-10 moves North, impacting private properties
- Space between Yandell and Wyoming maximized

Key:

- //// Terra Firma (Solid Ground)
- Building Opportunity
- Plaza Buildings, Robust Planting, Shade Structures, etc.



# Concept Sketch 2

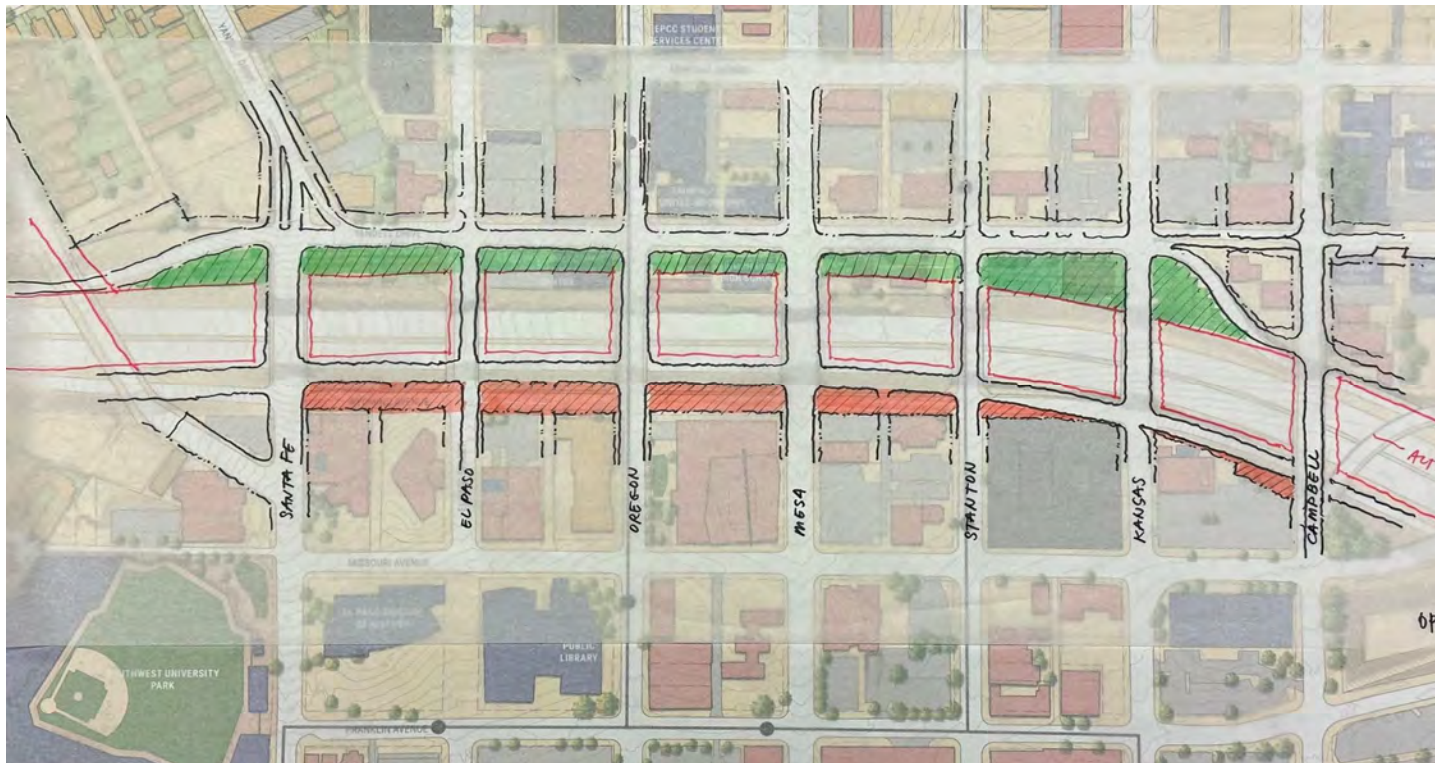


KEY: Institutional Use Commercial Use Residential Structured Parking Surface Parking Streetcar Stop Streetcar Route

EL PASO STREET PROJECT | El Paso, Texas



# Concept Framework 3



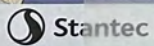
- I-10 moves North, impacting private properties
- Wyoming moves north, allowing for improved frontage

Key:

- /// Terra Firma (Solid Ground)
- Orange Building Opportunity
- Green Plaza Buildings, Robust Planting, Shade Structures, etc.



# Concept Sketch 3

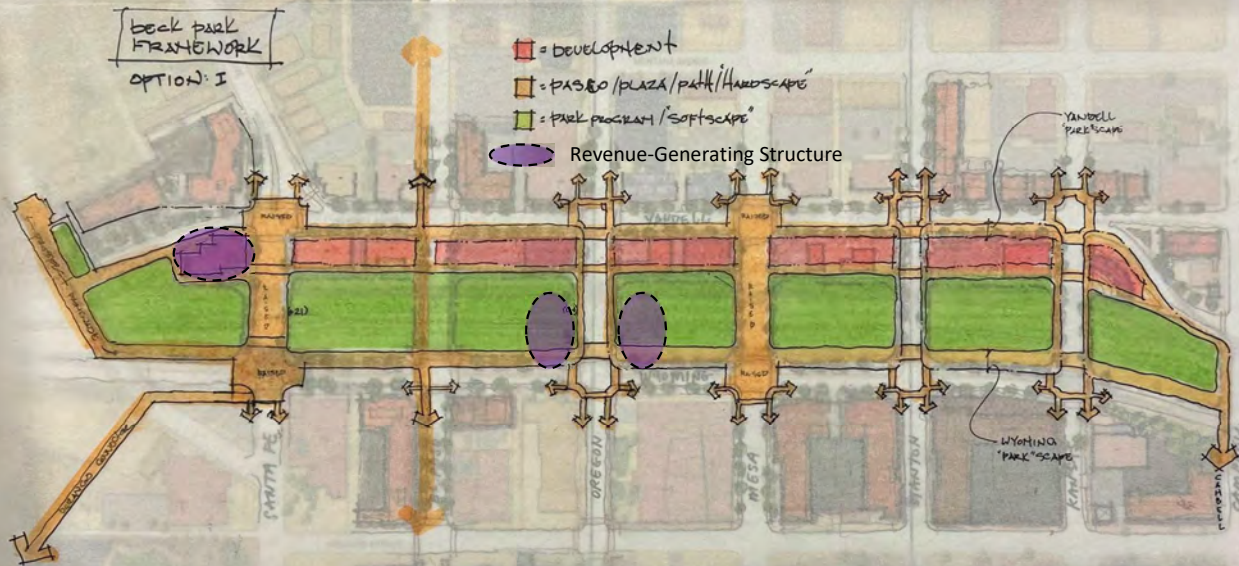


KEY: Institutional Use Commercial Use Residential Structured Parking Surface Parking Streetcar Stops Streetcar Route

EL PASO DICK PROJECT | El Paso, Texas



# Deck Framework







## Goals & Metrics

### Authentic Cultural Crossroads

- Symbolism
- Heritage
- Contemporary Culture
- Common Ground

### Inviting Sense of Place

- Active edges
- Amenity & Programming Variety
- Shade
- Safety
- Noise Mitigation

### Enhanced Accessibility/ Connectivity

- Street Grid
- Walkability
- ADA Access
- Bike-ability
- Transit access
- Vehicular access
- Parking



# Goals & Metrics

## Inclusive Economic Development

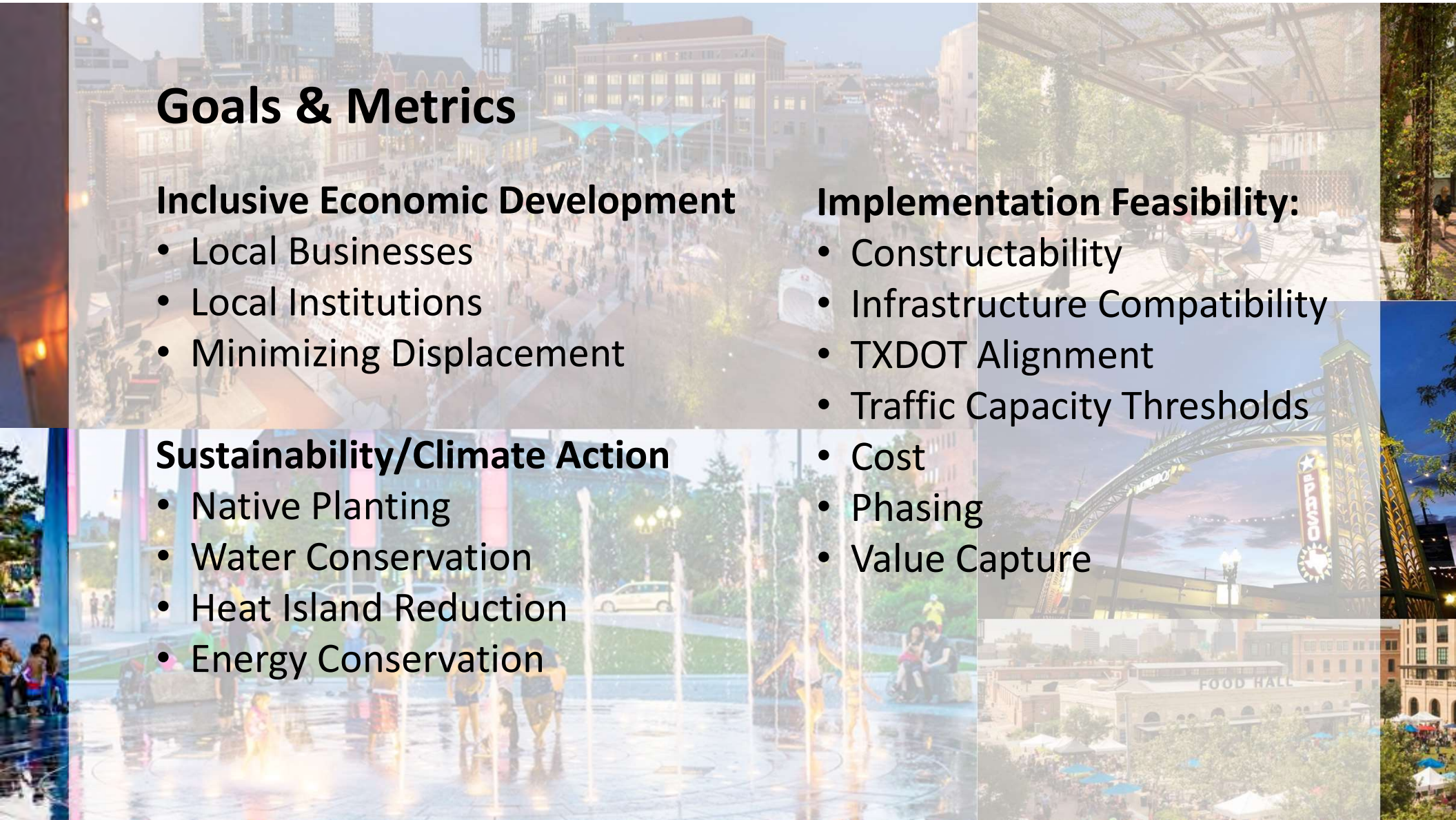
- Local Businesses
- Local Institutions
- Minimizing Displacement

## Implementation Feasibility:

- Constructability
- Infrastructure Compatibility
- TXDOT Alignment
- Traffic Capacity Thresholds
- Cost
- Phasing
- Value Capture

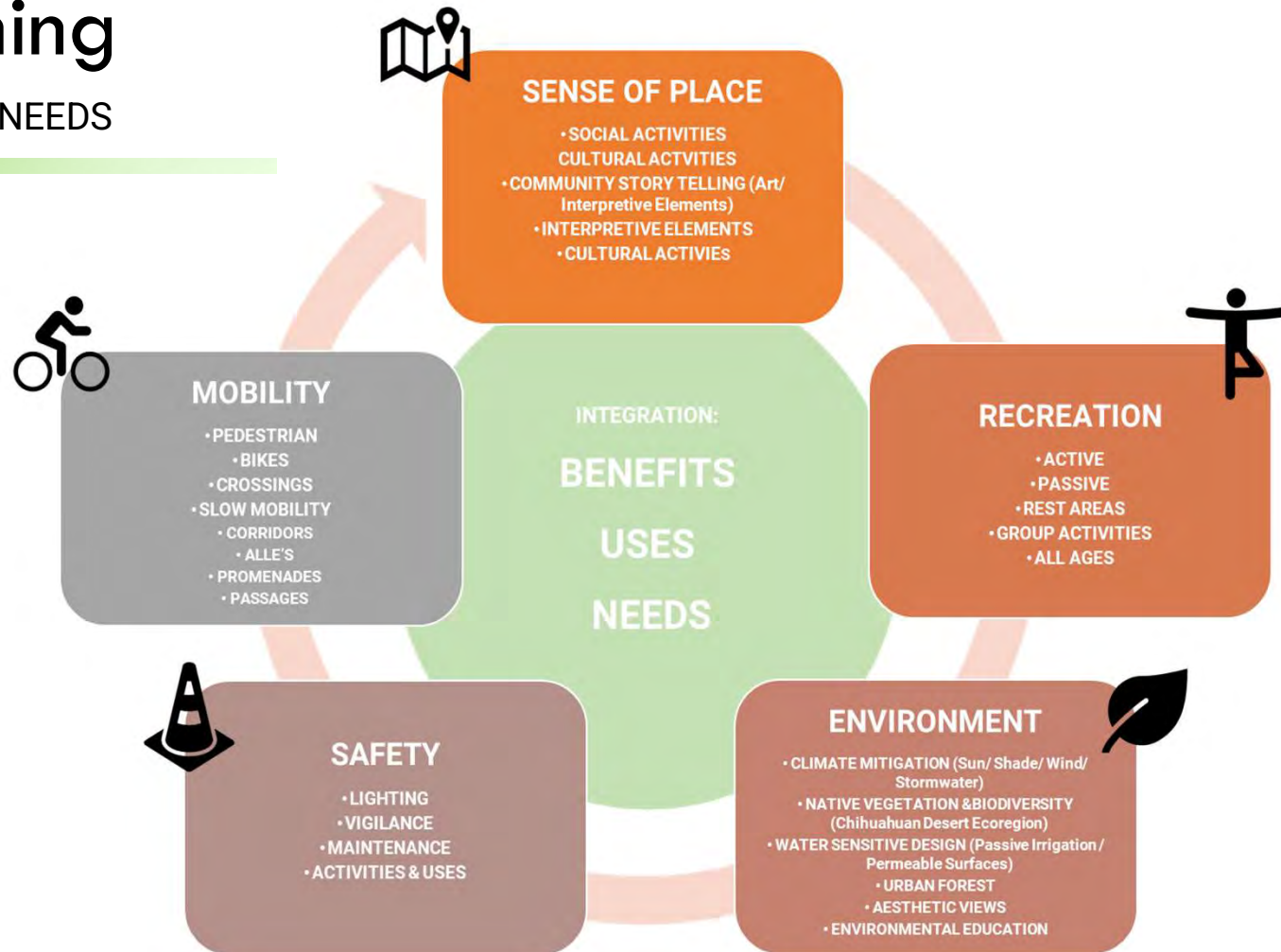
## Sustainability/Climate Action

- Native Planting
- Water Conservation
- Heat Island Reduction
- Energy Conservation



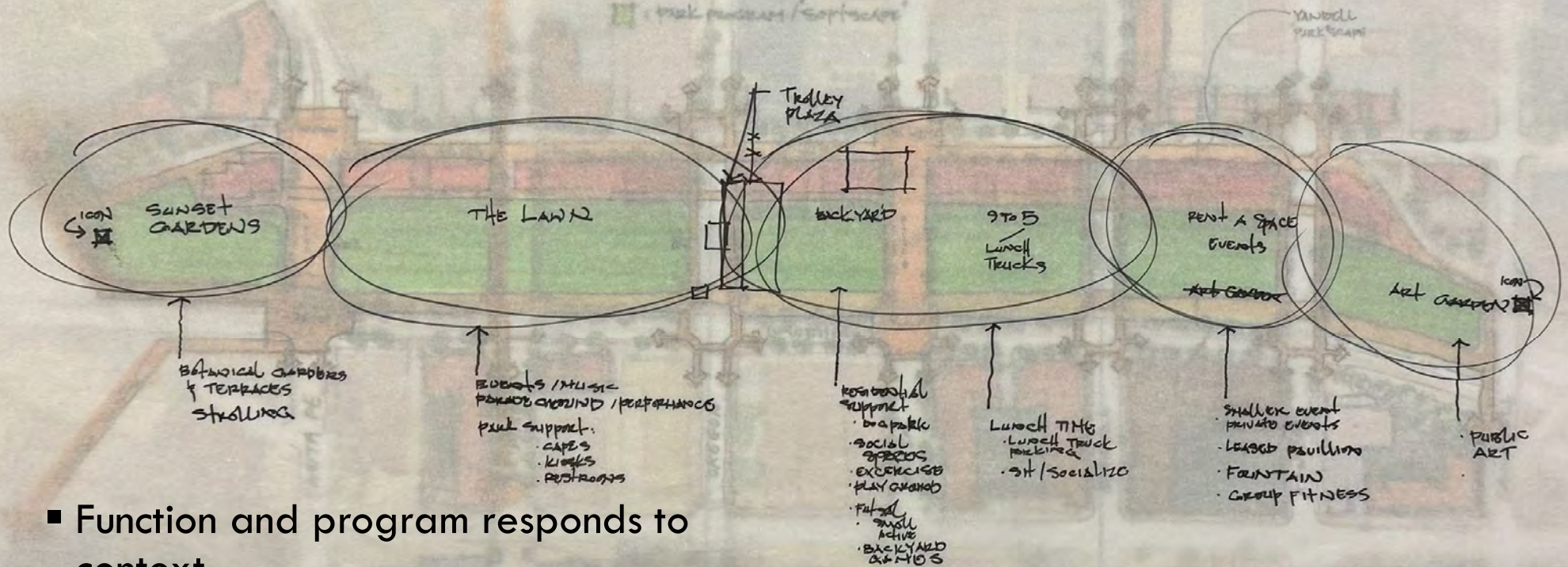
# Programming

BENEFITS / USERS / NEEDS





# Deck Plaza Land Use/Strategy



- Function and program responds to context
- Wide variety of uses & activities ranging from neighborhood-serving to regional-serving, active to passive, and civic/public to revenue generating



## SUNSET GARDENS

- Botanical Garden
- Terraces
- Overlook
- Strolling Paths
- Iconic elements
- Iconic elements





## The GREAT "LAWN"

- Events/Performances
- Kiosks/Cafes
- Restrooms
- Parades
- Movie screenings
- Cultural activities





## BACKYARD & 9 to 5

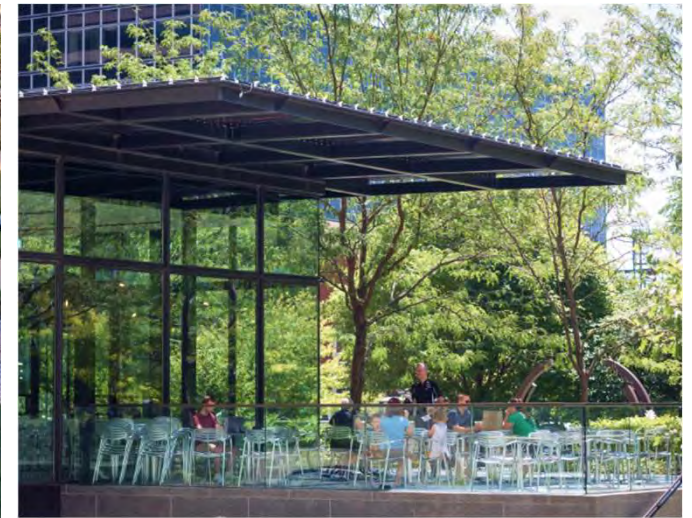
- Food trucks
- Back yard games
- Interactive games
- Playgrounds
- Sit/Socialize





## RENT-A-SPACE

- Private events
- Group fitness
- Leasable pavilions
- Fountains
- Weddings/  
Quinceaneras





## ART GARDEN

- Public art
- Iconic elements
- Overlook
- ?
- ?
- ?





## REVENUE GENERATION

- Food carts
- Music events
- Private events
- Food kiosks
- Food trucks
- Leasable pavilions



# Tell Us What You Think

---

- Where are we on the right track?
- Where are we on the wrong track?
- What are we missing?



# Wrap Up & Next CAC Meetings

---

Monday, April 17

Monday, May 15

5:30pm

City of El Paso Center for Civic Empowerment

Blue Flame Building

17<sup>th</sup> Floor



DOWNTOWN DECK  
PLAZA FOUNDATION